



# GULFSTREAM 1



# ORGATECH®

Since 1979 Orgatech® has been at the forefront of energy efficient glare free lighting. Our core values have been energy efficiency and visual comfort. Values which made us critical of the haphazard application of LEDs and the compromise of glare and lowering of standards of illumination.

We have been patient and unwavering in upholding our core values and our new designs genuinely fulfill the promise of LEDs without compromise.

Our new Gulfstream® designs are energy efficient, glare free, cost effective and technically superior luminaires. Fulfilling the promise of LEDs for commercial lighting.



# Gulfstream 1

---

**02** Contents

**06** About Gulfstream 1

**08** TYPE

**10** LED

**12** SECONDARY OPTIC

**14** GLARE CONTROL

---

**18** WHITE

**20** TUNABLE WHITE

**22** RGB

**24** RGBW

**26** ORDER INFORMATION

---

# Gulfstream 1

## POWER LED BAR



Gulfstream 1® is a high quality, low profile linear fixture designed for grazing and even illumination of tall facades and areas where a long throw or high intensity is required. Orgatech's® lens options enable Grazing, long throw Wallwashing, broad Wallwashing and Floodlighting. Adjustable brackets enable accurate aiming. Fixtures may be used individually as interconnected rows. Offering a greater stability and very long life in extreme climates.

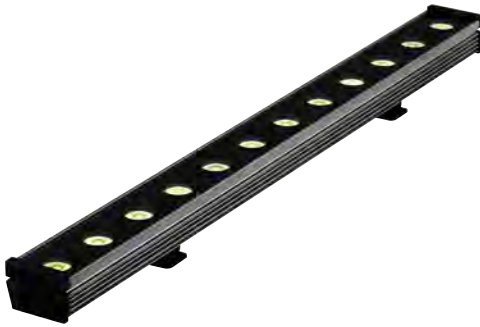


- | High performance luminaire
- | Superior optical control
- | Easy & flexible installation
- | IP67 protection
- | DMX / RDM Control
- | Accurate aiming

# Gulfstream1 Mount Type

TYPE / 01

**T1**  
DC 24V

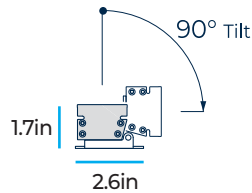


TYPE / 02

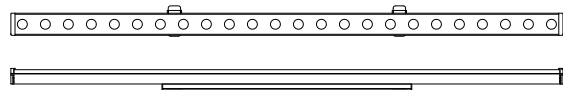
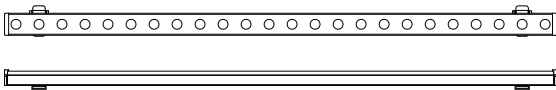
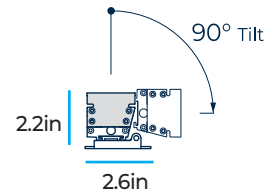
**T2**  
DC 24V



PWM DIMMING



DMX / RDM  
DMX  
DALI  
0-10(1-10V)  
PWM DIMMING





TYPE / 03

### T3

AC 120-277V  
DC 24V



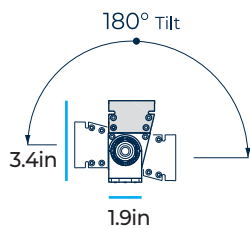
TYPE / 04

### T4

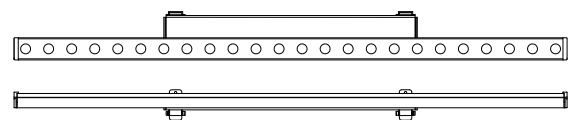
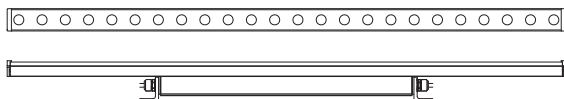
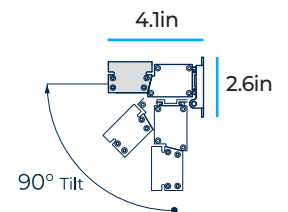
AC 120-277V  
DC 24V



DMX / RDM  
DMX  
DALI  
0-10(1-10V)  
PMW DIMMING



DMX / RDM  
DMX  
DALI  
0-10(1-10V)  
PMW DIMMING



24V input max Run = 30ft  
120V input max run = 145ft  
240V input max. run = 290ft

# Gulfstream 1 LED



L80>100,000hours Ta25°C

WHITE

● ● ● ● ●  
 2700K / 3000K / 4000K / 5000K / 6500K  
 HIGH POWER LEDS  
 CRI >80  
 3 SDCM STEP

TUNABLE WHITE

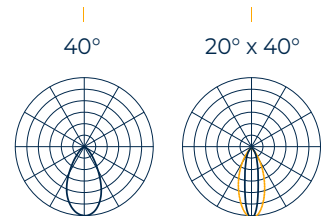
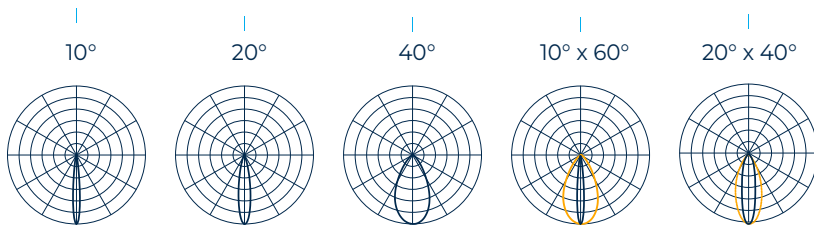
● - ●  
 2700K ~ 6500K

RGB

● ● ●  
 FULL COLOR

RGBW

● ●  
 ● ○  
 FULL COLOR +  
 REAL WHITE  
 (4000K or 6000K)



# Gulfstream 1 Secondary OPTIC



## WIDE OPTIC



### WIDE OPTIC

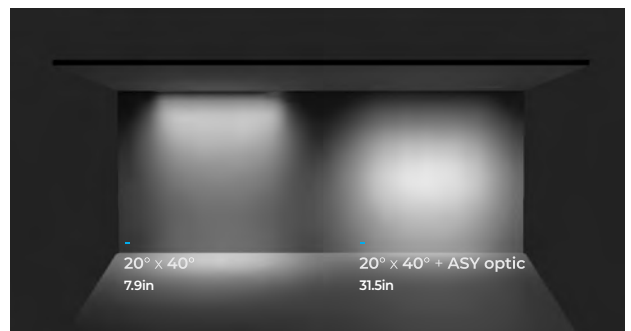
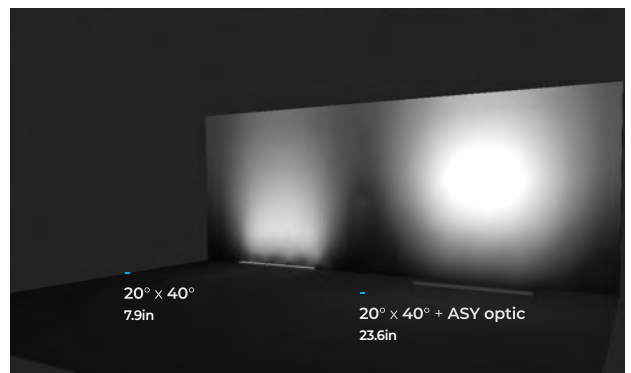
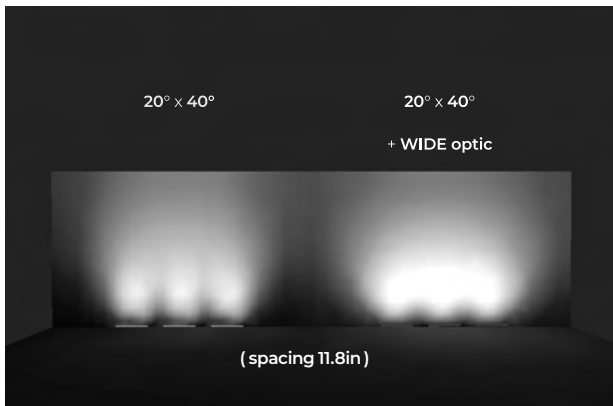
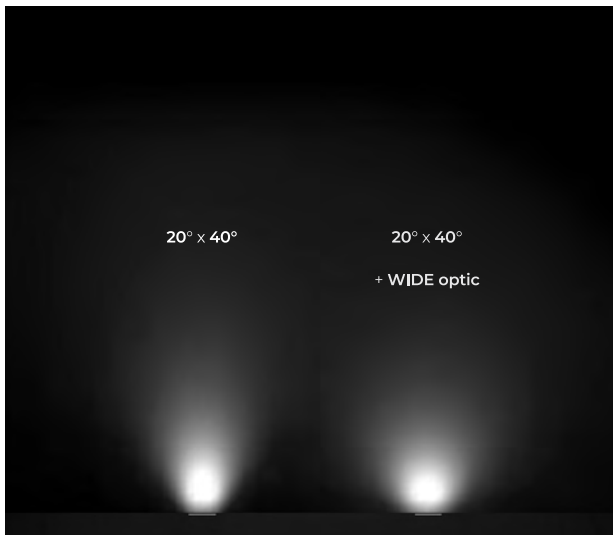
Wide optic evens illumination at close range.

## ASYMMETRIC OPTIC



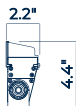
### ASYMMETRIC OPTIC

Asymmetric optic enables a 20 degree angle in its flat position.



# Gulfstream 1 Glare control

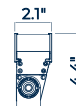
## LOUVER ASYMMETRY



Asymmetrical add on louver blocks the glare from front and side.



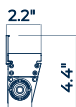
## LOUVER SYMMETRY



A Symmetrical add on louver blocks glare in four directions.



## GLARE SHIELD



The shield can be integrated into the lighting fixture to control the glare from the front.



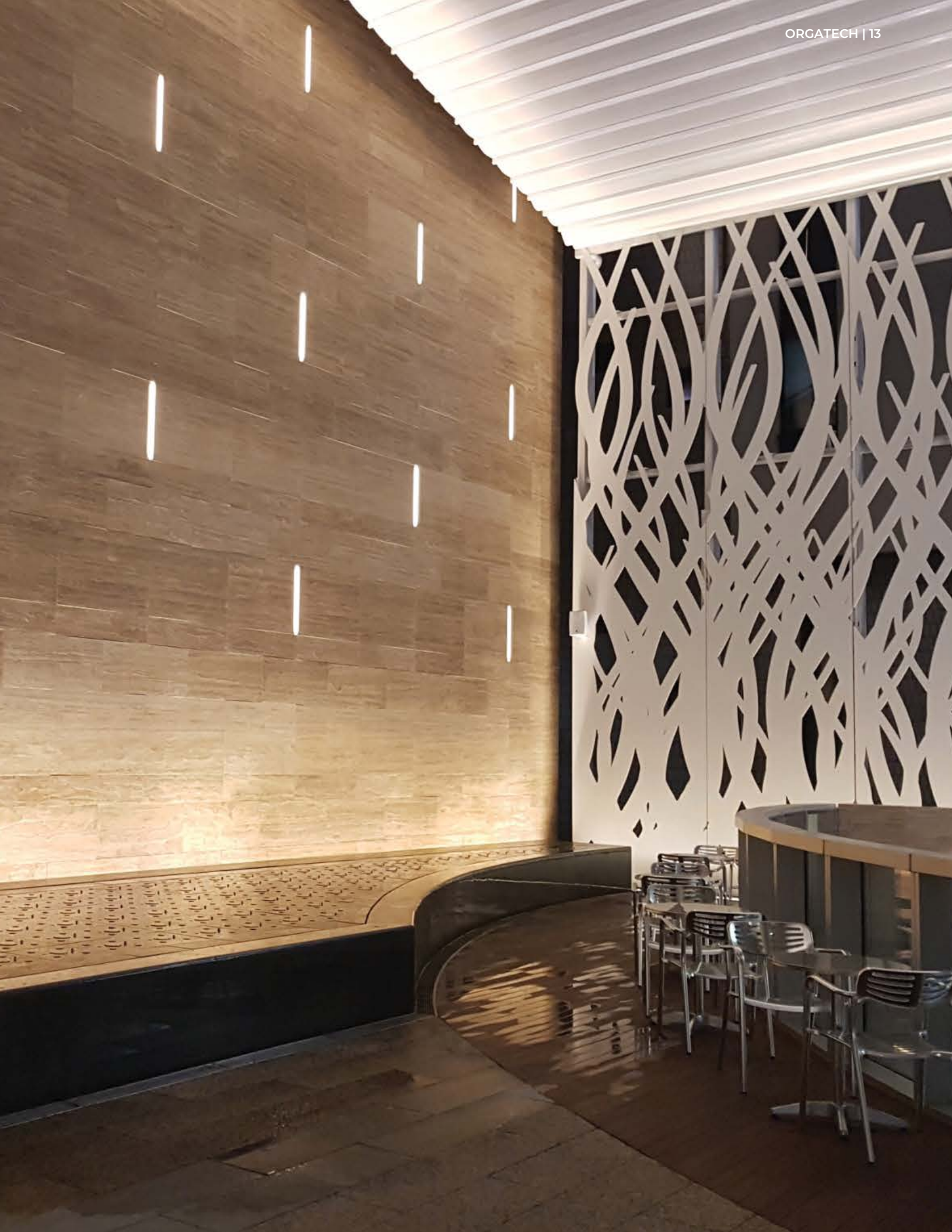
## MICRO LOUVER



The micro louvers are a built-in option and tilted to block out glare above 40 degrees from the vertical plane.







# Gulfstream 1 White - High





CCT 2700K / 3000K / 4000K / 5000K / 6500K
CRI 80+
SDCM STEP 3
BEAM ANGLE 10° / 20° / 40° / 10°x60° / 20°x40°
LED PITCH 2in
HOUSING Anodized Aluminum body / Tempered glass cover
PROTECTION IP67
OPERATING TEMPERATURE -20°C to +50°C
CONTROL DMX / RDM, DMX, DALI, 0-10(1-10V), PWM DIMMING

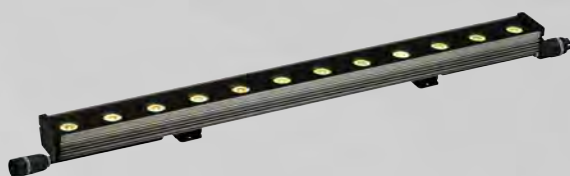
### T1, T2 INPUT / DC24V

LENGTH	11.8in	23.6in	35.4in	47.2in
POWER	14W	28W	42W	56W
LEDs	6LEDs	12LEDs	18LEDs	24LEDs
LUMENS	1205lm	2410lm	3615lm	4820lm

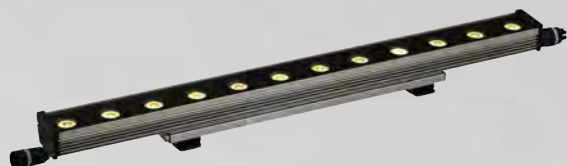
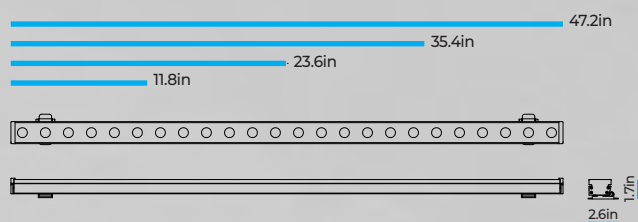
### T3, T4 INPUT / AC 120-277V

LENGTH	11.8in	23.6in	35.4in	47.2in
POWER	19W	32.5W	48W	63.5W
LEDs	6LEDs	12LEDs	18LEDs	24LEDs
LUMENS	1205lm	2410lm	3615lm	4820lm

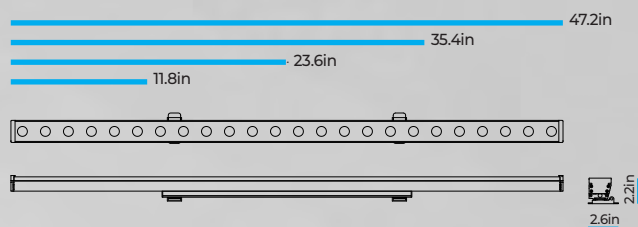
Data is based on product with 3000K and 10° lens.



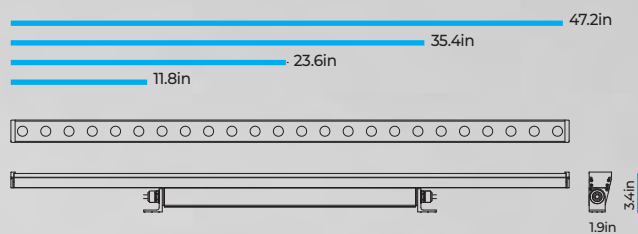
### Gulfstream 1 / T1 INPUT / DC24V



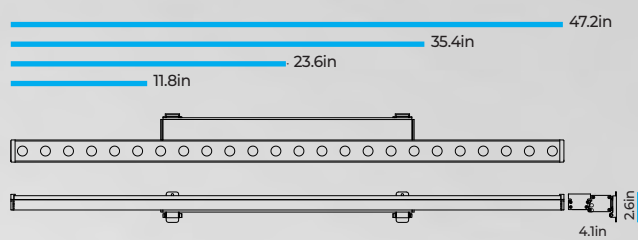
### Gulfstream 1 / T2 INPUT / DC24V



### Gulfstream 1 / T3 INPUT / AC 120-277V, DC 24V



### Gulfstream 1 / T4 INPUT / AC 120-277V, DC 24V



\* The specification and size of the products can be modified without prior notice.

# Gulfstream 1 White - Low



CCT 2700K / 3000K / 4000K / 5000K / 6500K
CRI 80+
SDCM STEP 3
BEAM ANGLE 10° / 20° / 40° / 10°x60° / 20°x40°
LED PITCH 3.9in
HOUSING Anodized Aluminum body / Tempered glass cover
INGRESS IP67
OPERATING TEMPERATURE -20°C to +50°C
CONTROL DMX / RDM, DMX, DALI, 0-10(1-10V), PWM DIMMING

**T1, T2 INPUT / DC12V / DC24V**

LENGTH	11.8in	23.6in	35.4in	47.2in
POWER	8W	16W	24W	32W
LEDs	3LEDs	6LEDs	9LEDs	12LEDs
LUMENS	600lm	1200lm	1800lm	2400lm

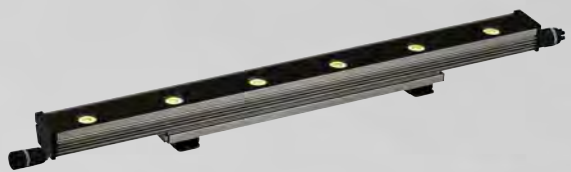
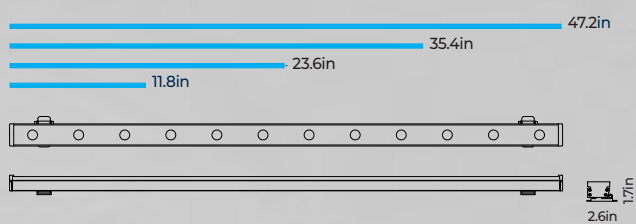
**T3, T4 INPUT / AC 120-277V**

LENGTH	11.8in	23.6in	35.4in	47.2in
POWER	13.5W	20.5W	28W	35.5W
LEDs	3LEDs	6LEDs	9LEDs	12LEDs
LUMENS	600lm	1200lm	1800lm	2400lm

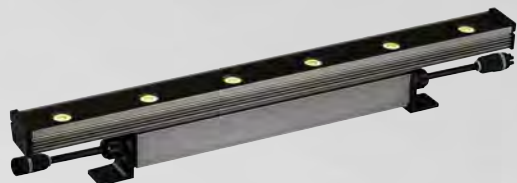
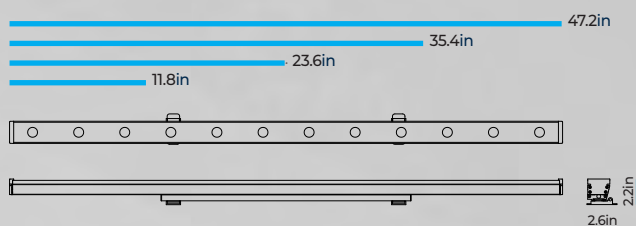
Data is based on product with 3000K and 10° lens.



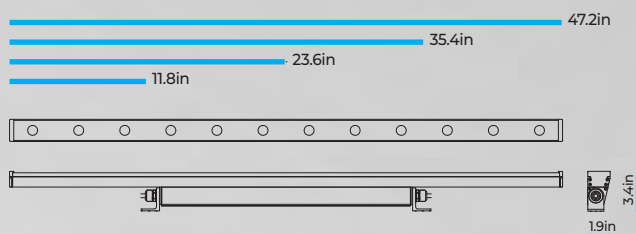
**Gulfstream 1 / T1 INPUT / DC12V**



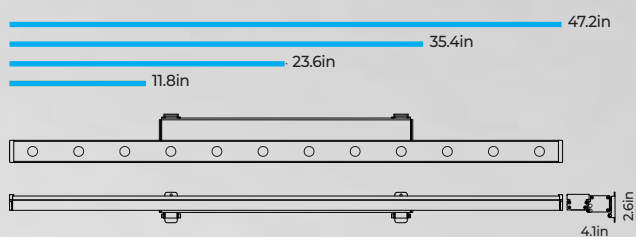
**Gulfstream 1 / T2 INPUT / DC24V**



**Gulfstream 1 / T3 INPUT / AC 120-277V, DC 24V**



**Gulfstream 1 / T4 INPUT / AC 120-277V, DC 24V**



\* The specification and size of the products can be modified without prior notice.

# Gulfstream 1 Tunable White



CCT 2700K - 6500K
CRI 80+
SDCM STEP 3
BEAM ANGLE 10° / 20° / 40° / 10°x 60° / 20°x 40°
LED PITCH 3in
HOUSING Anodized Aluminum body / Tempered glass cover
INGRESS IP67
OPERATING TEMPERATURE -20°C to +50°C
CONTROL DMX / RDM, DMX, DALI, 0-10(1-10V), PWM DIMMING

### T1 INPUT / DC24V

LENGTH	17.7in	35.4in
POWER	18W	36W
LEDs	12LEDs	24LEDs
LUMENS	1770lm	3540lm

### T2 INPUT / DC24V

LENGTH	11.8in	23.6in	35.4in	47.2in
POWER	14.5W	28W	38W	55W
LEDs	8LEDs	16LEDs	24LEDs	32LEDs
LUMENS	1180lm	2360lm	3540lm	4720lm

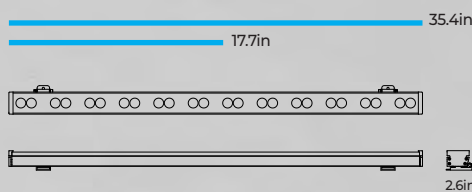
### T3, T4 INPUT / AC 120-277V

LENGTH	11.8in	23.6in	35.4in	47.2in
POWER	19W	33.5W	48W	65W
LEDs	8LEDs	16LEDs	24LEDs	32LEDs
LUMENS	1180lm	2360lm	3540lm	4720lm

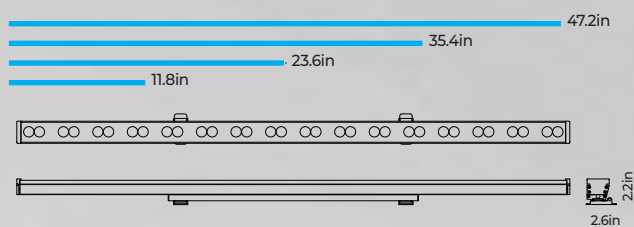
Data is based on product with 10° lens.



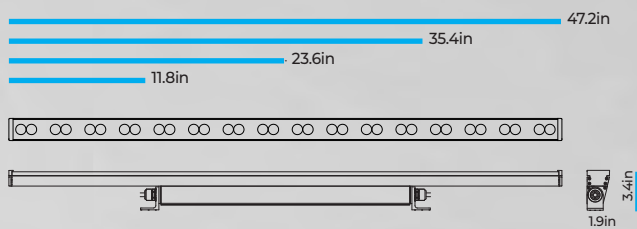
### Gulfstream 1 / T1 INPUT / DC24V



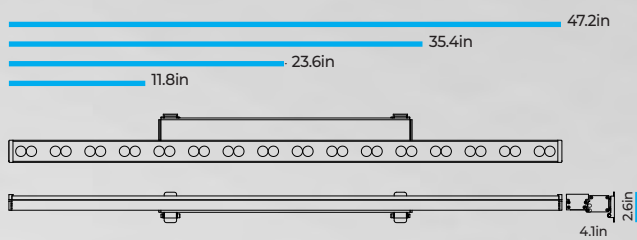
### Gulfstream 1 / T2 INPUT / DC24V



### Gulfstream 1 / T3 INPUT / AC 120-277V, DC 24V



### Gulfstream 1 / T4 INPUT / AC 120-277V, DC 24V



\* The specification and size of the products can be modified without prior notice.



# Gulfstream 1 RGB



- | CCT RGB
- | CRI 80+
- | BEAM ANGLE 10° / 20° / 40° / 10°x 60° / 20°x 40°
- | LED PITCH 3.9in
- | HOUSING Anodized Aluminum body / Tempered glass cover
- | INGRESS IP67
- | OPERATING TEMPERATURE -20°C to +50°C
- | CONTROL DMX / RDM, DMX, DALI, PWM DIMMING

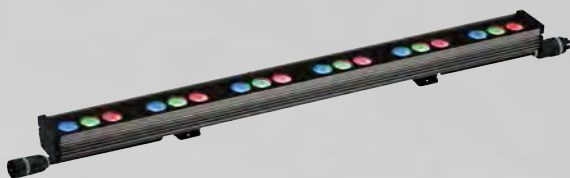
### T1, T2 INPUT / DC24V

LENGTH	11.8in	23.6in	35.4in	47.2in
POWER	14.5W	28W	41.5W	55W
LEDs	9LEDs	18LEDs	27LEDs	36LEDs
LUMENS	530lm	1060lm	1590lm	2120lm

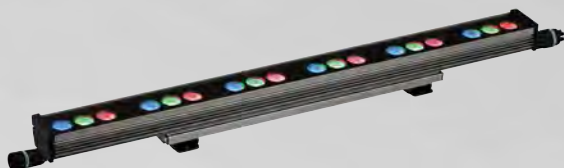
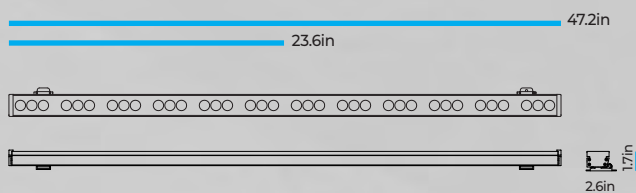
### T3, T4 INPUT / AC 120-277V

LENGTH	11.8in	23.6in	35.4in	47.2in
POWER	19W	32.5W	48W	63.5W
LEDs	9LEDs	18LEDs	27LEDs	36LEDs
LUMENS	530lm	1060lm	1590lm	2120lm

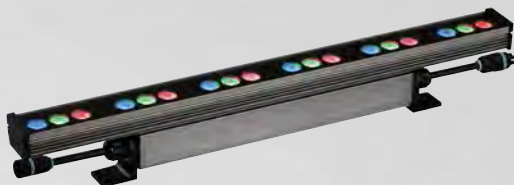
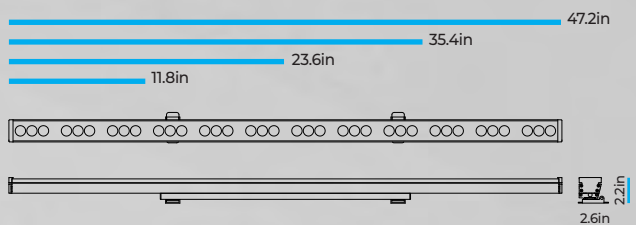
Data is based on product with 10° lens.



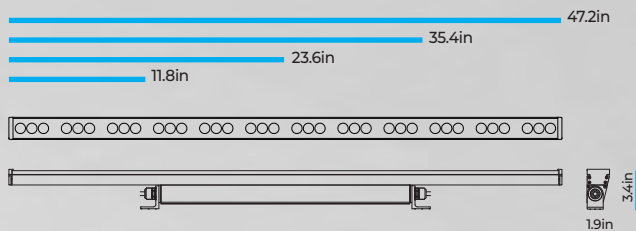
### Gulfstream 1 / T1 INPUT / DC24V



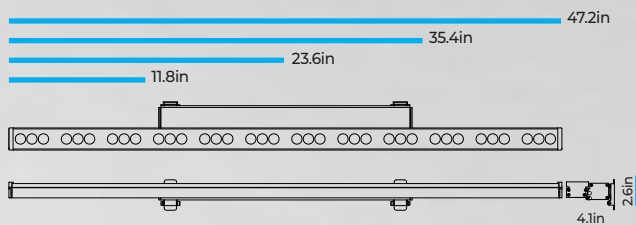
### Gulfstream 1 / T2 INPUT / DC24V



### Gulfstream 1 / T3 INPUT / AC 120-277V, DC 24V

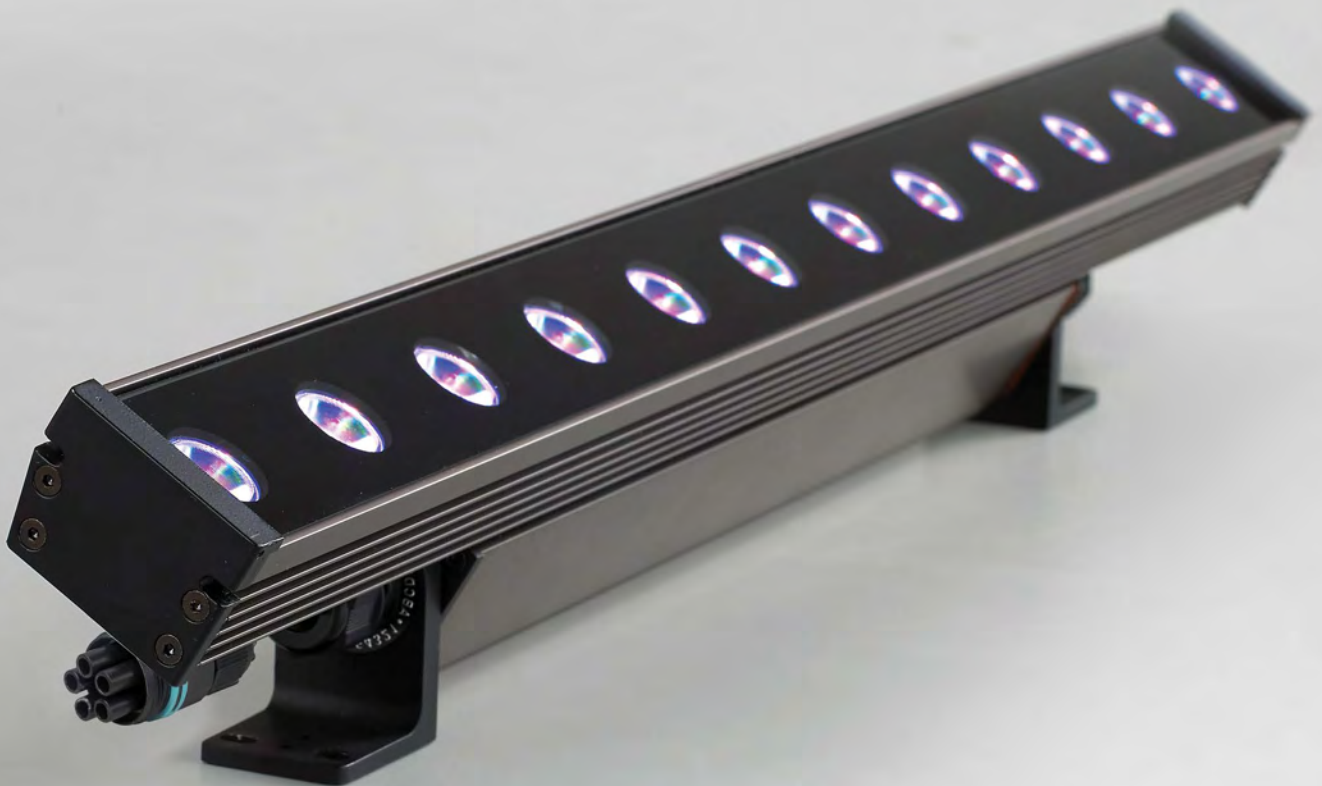


### Gulfstream 1 / T4 INPUT / AC 120-277V, DC 24V



\* The specification and size of the products can be modified without prior notice.

# Gulfstream 1 RGBW





<b>CCT</b> RGBW (4000K / 6000K)
<b>CRI</b> 80+
<b>BEAM ANGLE</b> 40° / 20°x 40°
<b>LED PITCH</b> 2in
<b>HOUSING</b> Anodized Aluminum body / Tempered glass cover
<b>INGRESS</b> IP67
<b>OPERATING TEMPERATURE</b> -20°C to +50°C
<b>CONTROL</b> DMX / RDM, DMX, DALI, PWM DIMMING

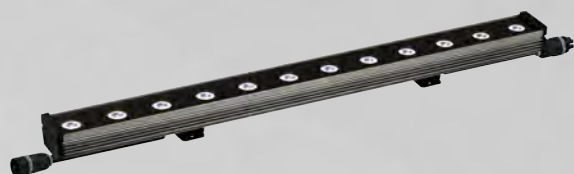
### T1, T2 INPUT / DC24V

<b>LENGTH</b>	11.8in	23.6in	35.4in	47.2in
<b>POWER</b>	14.5W	29W	43.5W	58W
<b>LEDs</b>	6LEDs	12LEDs	18LEDs	24LEDs
<b>LUMENS</b>	540lm	1080lm	1620lm	2160lm

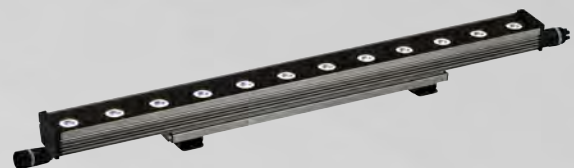
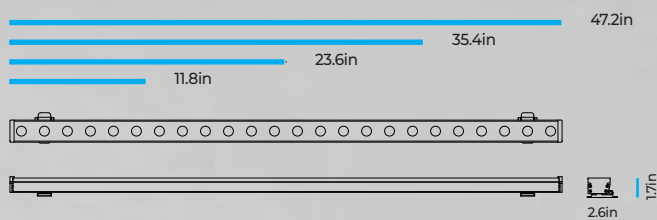
### T3, T4 INPUT / AC 120-277V

<b>LENGTH</b>	11.8in	23.6in	35.4in	47.2in
<b>POWER</b>	19W	33.5W	48W	65W
<b>LEDs</b>	6LEDs	12LEDs </td <td>18LEDs</td> <td>24LEDs</td>	18LEDs	24LEDs
<b>LUMENS</b>	540lm	1080lm	1620lm	2160lm

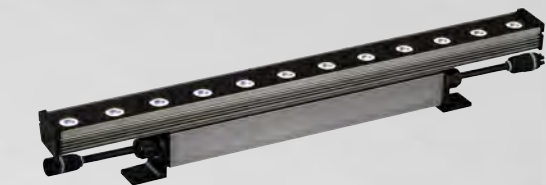
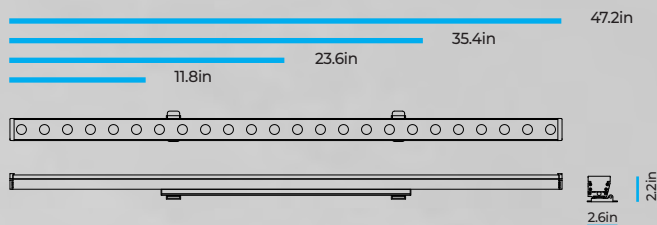
Data is based on product with 20°x40° lens.



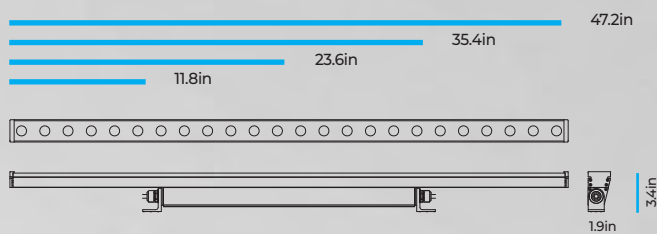
### Gulfstream 1 / T1 INPUT / DC24V



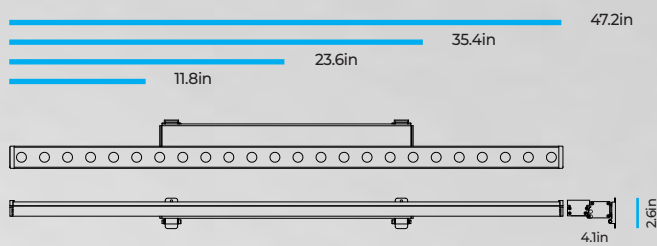
### Gulfstream 1 / T2 INPUT / DC24V



### Gulfstream 1 / T3 INPUT / AC 120-277V, DC 24V



### Gulfstream 1 / T4 INPUT / AC 120-277V, DC 24V



\* The specification and size of the products can be modified without prior notice.

# Gulfstream 1 Order Information

Make selections by filling out the top row or highlighting options.

## GULFSTREAM 1 - WHITE

GS1									
SERIES	MOUNT TYPE	LENGTH (nom. ft)	OUTPUT	CCT	VOLTAGE	CONTROLS	BEAM ANGLE	SECONDARY OPTIC	OPTIONS
GS1 GULFSTREAM 1	T1 T2 T3 T4	1 2 3 4	LS STANDARD LH HIGH	27K 30K 40K 50K 65K	U 120-277V 24V 24V 12V 12V*	DMX /RDM DMX DALI (0-10V) PWM	10 20 40 10x60 20x40	ASY ASYMMETRIC OPTIC COVER WID WIDE OPTIC COVER N NONE	LOA LOUVER ASYMMETRIC LOS LOUVER SYMMETRIC MLV MICRO LOUVER G GLARE SHIELD N NONE

\* T1 / LS only

## GULFSTREAM 1 - TUNABLE WHITE

GS1									
SERIES	MOUNT TYPE	LENGTH (nom. ft)	OUTPUT	CCT	VOLTAGE	CONTROLS	BEAM ANGLE	SECONDARY OPTIC	OPTIONS
GS1 GULFSTREAM 1	T1 T2 T3 T4	1.5 3 1 2 3 4	LS STANDARD LH HIGH	TW	U 120-277V 24V 24V	DMX /RDM DMX DALI (0-10V) PWM	10 20 40 10x60 20x40	ASY ASYMMETRIC OPTIC COVER WID WIDE OPTIC COVER N NONE	LOA LOUVER ASYMMETRIC LOS LOUVER SYMMETRIC MLV MICRO LOUVER G GLARE SHIELD N NONE

## GULFSTREAM 1 - RGB

GS1									
SERIES	MOUNT TYPE	LENGTH (nom. ft)	CCT	VOLTAGE	CONTROLS	BEAM ANGLE	SECONDARY OPTIC	OPTIONS	
GS1 GULFSTREAM 1	T1	2 4	RGB	U 120-277V 24V 24V	DMX / RDM DMX DALI PWM	10 20 40 10x60 20x40	ASY ASYMMETRIC OPTIC COVER WID WIDE OPTIC COVER N NONE	LOA LOUVER ASYMMETRIC LOS LOUVER SYMMETRIC MLV MICRO LOUVER G GLARE SHIELD N NONE	
GS1P GULFSTREAM 1 PIXEL	T2 T3 T4	1 2 3 4							

## GULFSTREAM 1 - RGBW

GS1									
SERIES	MOUNT TYPE	LENGTH (nom. ft)	CCT	VOLTAGE	CONTROLS	BEAM ANGLE	SECONDARY OPTIC	OPTIONS	
GS1 GULFSTREAM 1	T1 T2	1 2	RGBW40K RGBW60K	U 120-277V 24V 24V	DMX / RDM DMX	40 20x40	ASY ASYMMETRIC OPTIC COVER	LOA LOUVER ASYMMETRIC	
GS1P GULFSTREAM 1 PIXEL	T3 T4	3 4			DALI PWM		WID WIDE OPTIC COVER N NONE	LOS LOUVER SYMMETRIC MLV MICRO LOUVER G GLARE SHIELD N NONE	

DALI dimming system only 2ft, 3ft, 4ft.

T1 MODEL Only PWM DIMMING(remote control driver dimming)

**ACCESSORIES**

**IP67 QUICK CONNECT STARTER & JUMPER CABLES**

\*Custom lengths available

PART #	DESCRIPTION
GSSC5P-5	GS1-2 Starter Cable 5ft
GSSC5P-10	GS1-2 Starter Cable 10ft
GSSC5P-15	GS1-2 Starter Cable 15ft
GSSC5P-20	GS1-2 Starter Cable 20ft

PART #	DESCRIPTION
GSJ5P-5	GS1 Jumper Cable 5ft
GSJ5P-10	GS1 Jumper Cable 10ft
GSJ5P-15	GS1 Jumper Cable 15ft
GSJ5P-20	GS1 Jumper Cable 20ft

PART #	DESCRIPTION
GSEC	GS1 End Cap

**DRIVER ORDERING CHART** IP67 Rated, 120V-277V in –12V/24V/48V out.

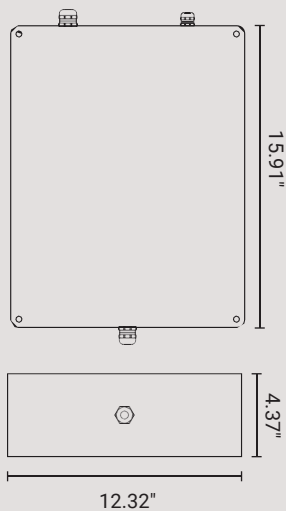
Make selections by filling out the top row to create part number. (Choose your wattage, dimming, & output voltage)

Part Number Example: BSD-40-CV-U-N-N-MW-24V

BSD	<input type="text"/>	CV	U	<input type="text"/>	N	MW	<input type="text"/>
	<b>WATTAGE</b>			<b>DIMMING</b>			<b>OUTPUT VOLTAGE</b>
	40			N (NON DIMMING)			12V
	60			D1 (0-10V DIMMING)			24V
	100						48V
	120						
	150						
	185						
	320						
	480						
	600						
	1000						
	1500*						
	2500*						

\*1500W & 2500W rated for indoor use only

**IP67 ENCLOSURE**



**IP67 ENCLOSURE SPECIFICATIONS**

Input Voltage	120-277V AC
Input Data	DMX 512 / ON/OFF
Output	DC + DMX 512 / DC + ON/OFF
Output Wattage	500W / 1000W / 2000W
Weight	Max. 22lbs
Operating Temperature	min -20°C, max 60°C
Storage Temperature	min -40°C, max 85°C
Ingress	IP67

PART #	DESCRIPTION
GSIFE-500W	GS1-2 IP67 Enclosure - 500W
GSIFE-1000W	GS1-2 IP67 Enclosure - 1000W
GSIFE-2000W	GS1-2 IP67 Enclosure - 2000W

