

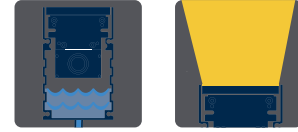
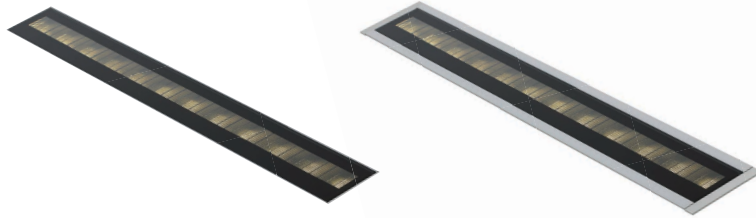
Gulfstream 2[®]

Inground Wallwash

27K | 30K | 40K | 50K | 65K
120-277V AC
IP68/IK10

ORGATECH[®]

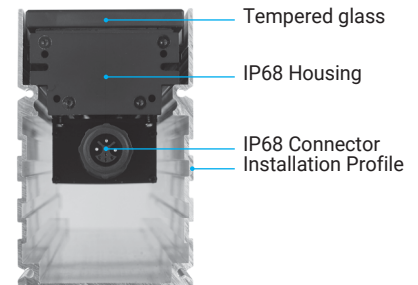
High Performance Luminaire
Superior Glare Control
Easy Installation
IP68 Protection
High level of ingress protection for outdoor applications.



Outdoor buriable IP68, very high output luminaire with glare control and secondary lenses for asymmetric throw. Gulfstream 2[®] is available with trim or as a trimless model with a seamless tempered glass edge, exposing only a thin border of the inground mounting housing. Stand alone or continuous housings with covers between fixtures which simplify installation by providing a thru-wiring option. Options include internal louvers for glare control and non-slip lens treatments. Gulfstream 2[®] is also available with white LEDs and the option of line voltage options.

Technical Specifications

Length (nom)	1ft	2ft	3ft	4ft
Voltage	120-277V AC			
Wattage	LS 13.5W LH 19W	20.5W 32.5W	28W 48W	35.5W 65W
Lumens	LS 600lm LH 1205lm	1200m 2410lm	1800lm 3615lm	2400lm 4820lm
Dimensions (LxWxH)	T1 12.7"x3"x3.2" T2 12.7"x3"x4.7"	24.5"x3"x3.2" 24.5"x3"x4.7"	36.3"x3"x3.2" 36.3"x3"x4.7"	48.1"x3"x3.2" 48.1"x3"x4.7"
Luminaire weight	3.48 lbs.	5.20 lbs.	7.41 lbs.	10.05 lbs.
Inground profile weight	1.67 lbs.	3.35 lbs.	5.03 lbs.	6.61 lbs.
CCT	2700K / 3000K / 4000K / 5000K / 6500K			
Color rendering index	80+ (white)			
LED lifetime	LM80 ≤ 100,000h			
Thru-Wiring (Max)	120V - 145ft / 240V - 290ft			
Control	DMX with RDM / DMX/ DALI / 0-10(1-10V) / PWM DIMMING			
Housing	Extruded aluminum / Tempered glass cover			
Finish	Anodized dark gray / Liquid painted for black			
Ingress	IP68 / IK10			
Certifications	UL Listed, CE, ROHS			



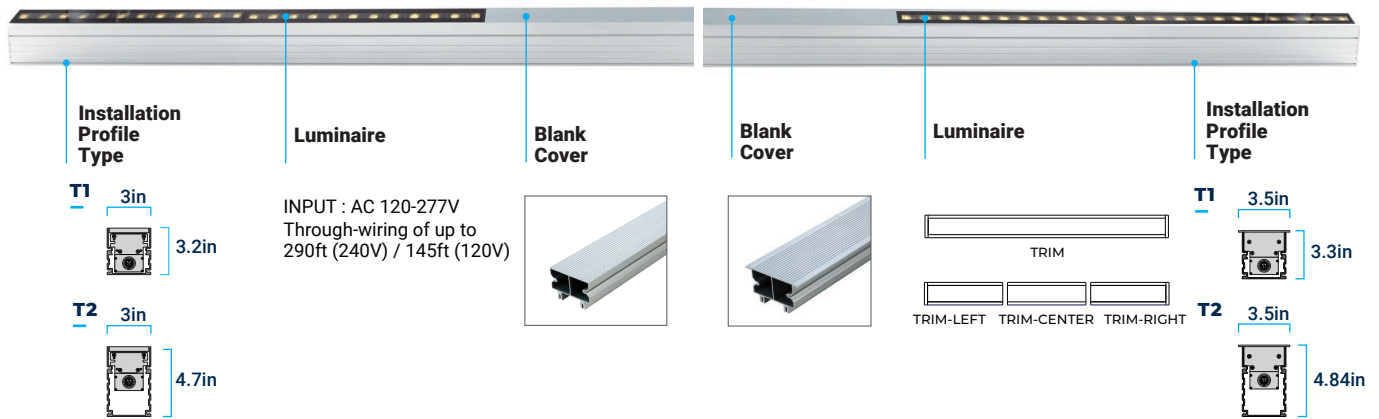
Secondary Optic	Wide Optic Asymmetric Optic
Optics	10° 20° 40° 10° x 60° 20° x 40°
Luminaire efficacy	Up to 86lm/W
Operating Temperature	min -4°F (-20°C) max 122°F (50°C)
Storage Temperature	min -22°F (-30°C) max 176°F (80°C)
Trim	Trimless Trim Trim-Left Trim-Center Trim-Right

ORDERING GUIDE Make selections by filling out the top row or highlighting options.

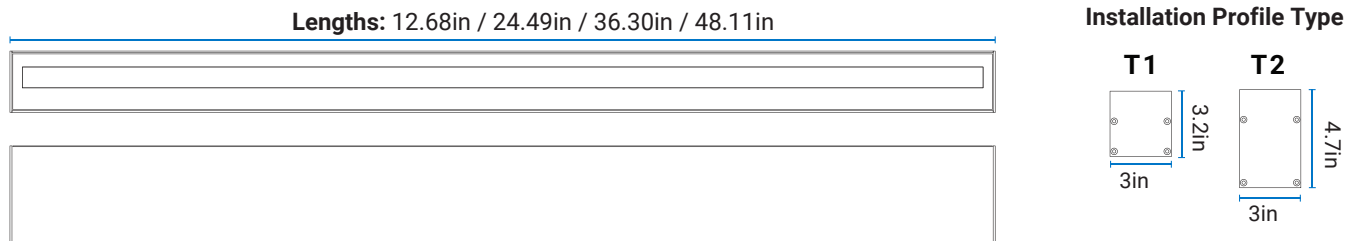
GS2										
SERIES	TYPE	LENGTH (nom. ft)	OUTPUT	CCT	VOLTAGE	CONTROL	OPTICS	SECONDARY OPTIC	TRIM	ACCESSORY
GS2 GULFSTREAM2	T1 T2	1 2 3 4	LS STANDARD LH HIGH	27K 30K 40K 50K 65K	U 120-277V AC	DMX / RDM DMX DALI (0-10V) PWM	10 20 40 10x60 20x40	ASY ASYMMETRIC LENS WID WIDE LENS N NONE	TL TRIMLESS TM TRIM Row only ----- TML TRIM-LEFT TMC TRIM-CENTER TMR TRIM-LEFT	NS NON-SLIP TREATMENT MLV MICRO LOUVER N NONE

Trimless

Trim



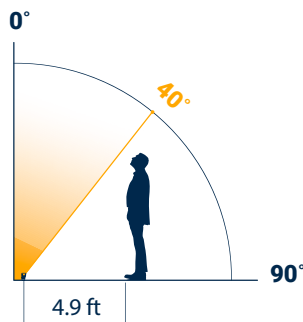
DIMENSIONS



ACCESSORY OPTIONS

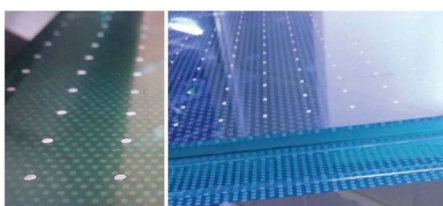
Micro Louver Option

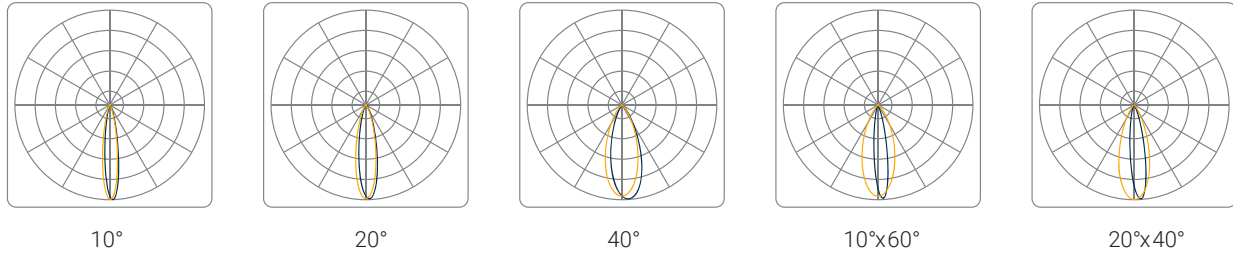
Micro louvers are a built-in option and tilted to block out glare above 40 degrees from the verticle plane.



Non-Slip Treatment Option

Makes fixture slip-resistant.

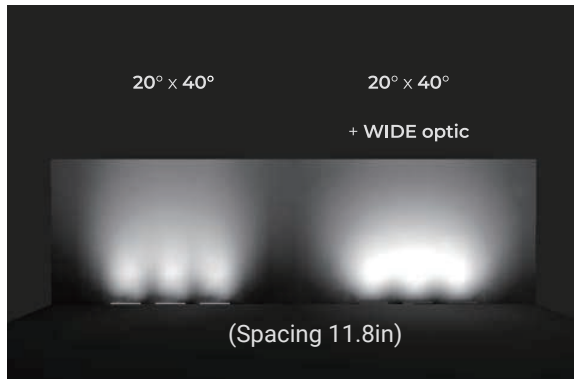
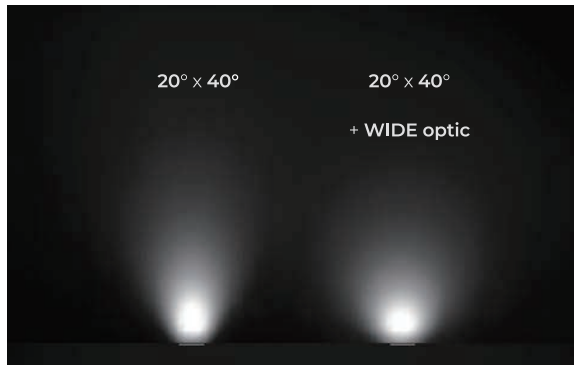




SECONDARY OPTICS

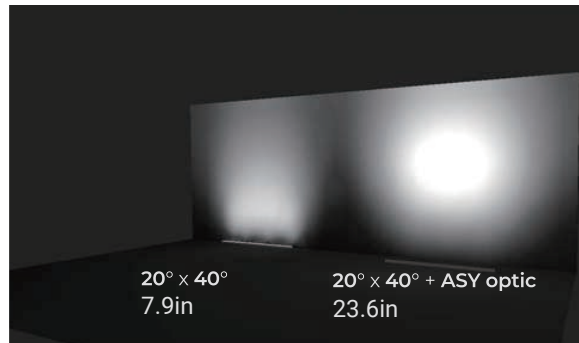
Wide Optic

Wide optic evens illumination at close range.

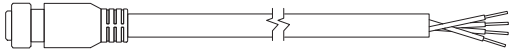


Asymmetric Optic

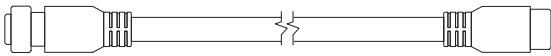
Asymmetric optic enables a 20 degree angle from the flat position.



Starter Cable



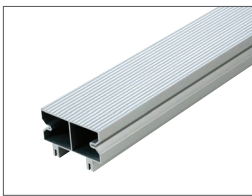
Jumper Cable



End Cap



Trimless Blank Cover



Trim Blank Cover



TRIMLESS



TRIM



HOUSING TYPE 1

PART #	DESCRIPTION
GS2T1-1	Housing Type T1 / 1FT
GS2T1-2	Housing Type T1 / 2FT
GS2T1-3	Housing Type T1 / 3FT
GS2T1-4	Housing Type T1 / 4FT
GS2T1-6	Housing Type T1 / 6FT
GS2T1-9	Housing Type T1 / 9FT

IP67 QUICK CONNECT STARTER & JUMPER CABLES

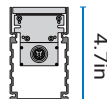
(Custom lengths available)

PART #	DESCRIPTION
GSSC5P-5	GS1-2 Starter Cable 5ft
GSSC5P-10	GS1-2 Starter Cable 10ft
GSSC5P-15	GS1-2 Starter Cable 15ft
GSSC5P-20	GS1-2 Starter Cable 20ft
GSJ5P-5	GS1-2 Jumper Cable 5ft
GSJ5P-10	GS1-2 Jumper Cable 10ft
GSJ5P-15	GS1-2 Jumper Cable 15ft
GSJ5P-20	GS1-2 Jumper Cable 20ft
GS2EC	GS2 End Cap

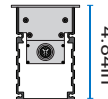
BLANK COVER

PART #	DESCRIPTION
GS2TLBC-3	Trimless Blank Cover / 3FT
GS2TLBC-6	Trimless Blank Cover / 6FT
GS2TLBC-9	Trimless Blank Cover / 9FT
GS2TMBC-3	Trim Blank Cover / 3FT
GS2TMBC-6	Trim Blank Cover / 6FT
GS2TMBC-9	Trim Blank Cover / 9FT

TRIMLESS

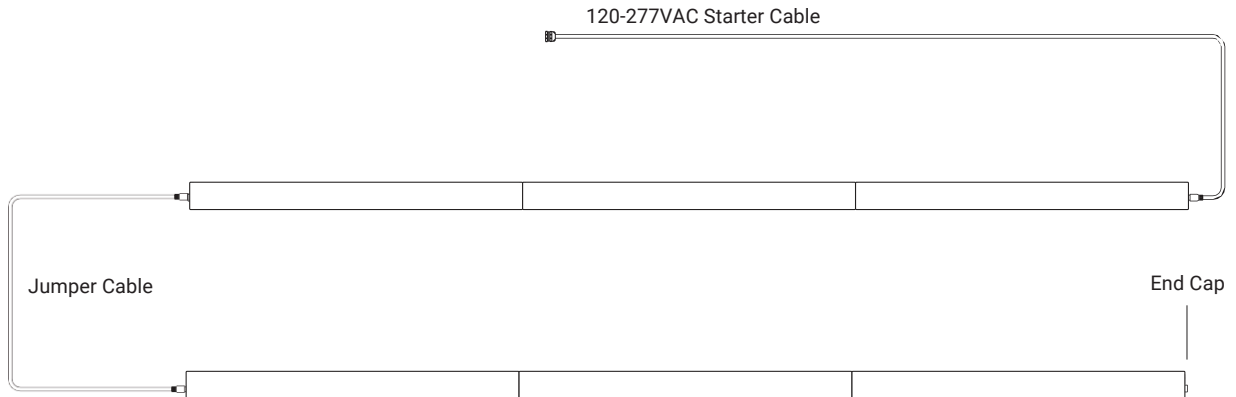


TRIM



HOUSING TYPE 2

PART #	DESCRIPTION
GS2T2-1	Housing Type T2 / 1FT
GS2T2-2	Housing Type T2 / 2FT
GS2T2-3	Housing Type T2 / 3FT
GS2T2-4	Housing Type T2 / 4FT
GS2T2-6	Housing Type T2 / 6FT
GS2T2-9	Housing Type T2 / 9FT



ELECTRICAL DETAILS

120VAC-277VAC

