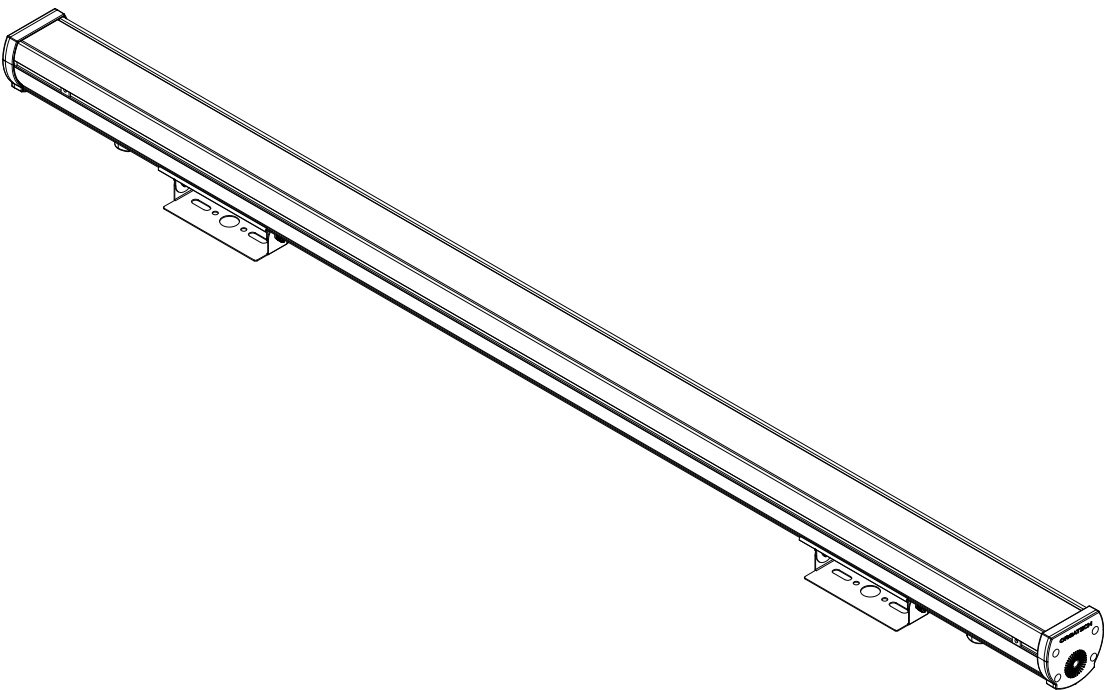
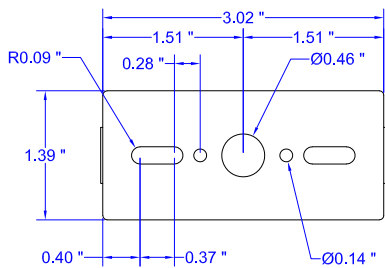




- READ THE PROVIDED INSTRUCTIONS PRIOR TO INSTALLING.
- INSTALLATION MUST BE CARRIED OUT BY QUALIFIED INSTALLERS.
- THE INSTALLER HAS THE FINAL RESPONSIBILITY FOR THE STRENGTH AND RIGIDITY OF THE WALL/CEILING/FLOOR STRUCTURE.
- A MINIMUM OF 2 PEOPLE REQUIRED WHEN INSTALLING LONG LENGTH FIXTURES.



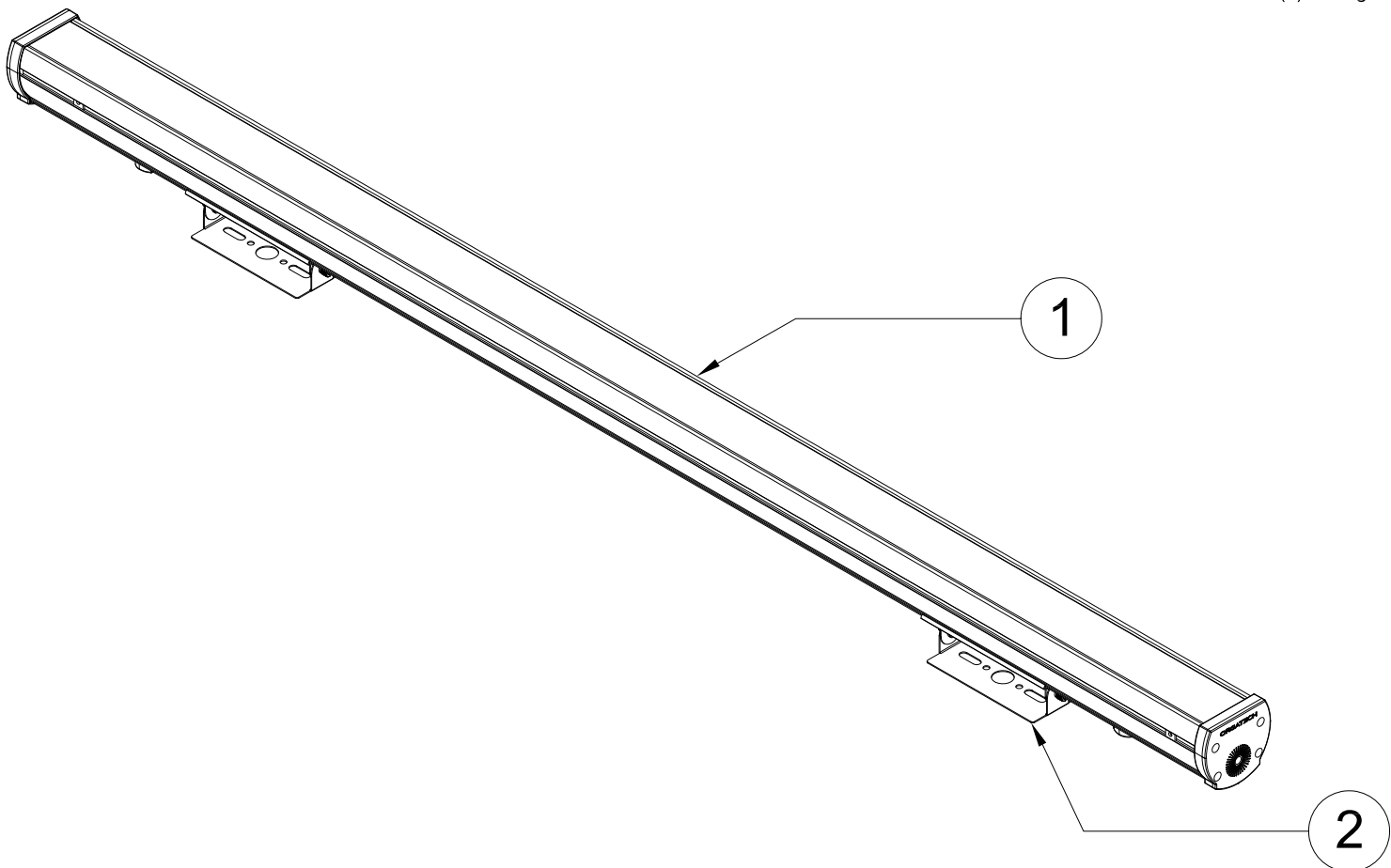
MOUNTING DIMENSIONS



ITEMS NEEDED (SUPPLIED BY OTHERS)



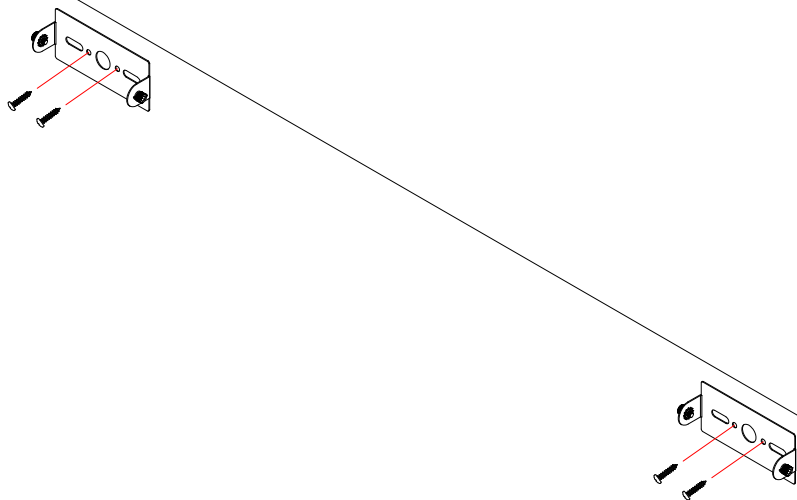
ISOMETRIC / EXPLODED VIEW



(1) 1300 Minatura Fixture  
(2) Sliding Bracket

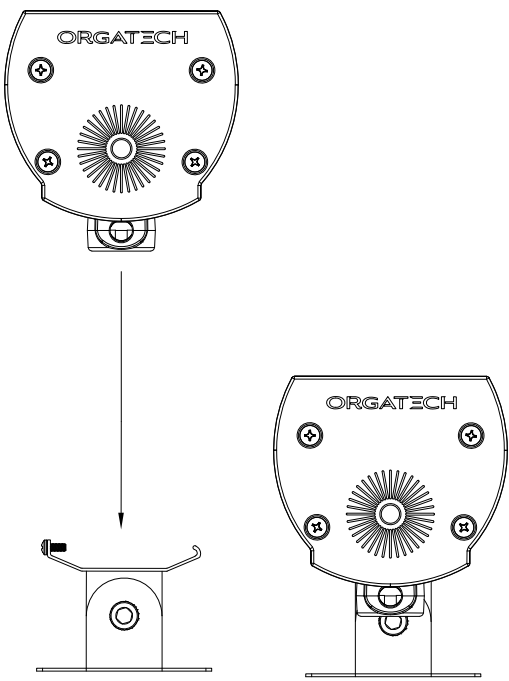
1 MOUNT 1300 SLIDING BRACKET ON SURFACE

DRILL AND SCREW BRACKETS IN PLACE.  
USE SLOTTED HOLES AS NECESSARY.

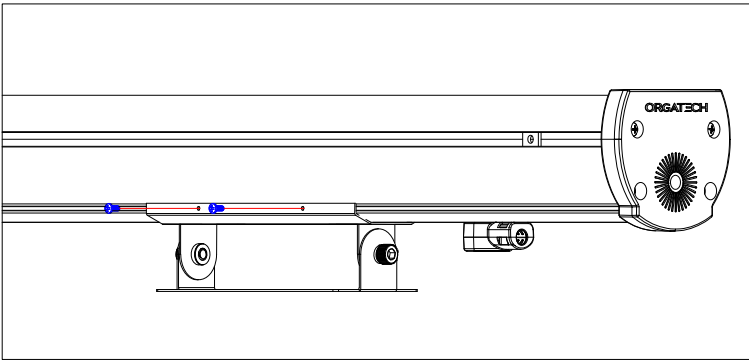


2 SECURE FIXTURE TO THE SLIDING BRACKET

PLACE FIXTURE ON TOP OF SLIDING BRACKET  
FIX SCREWS ON SIDE OF 1300 MINATURA FIXTURE TO SECURE



1.



2.

